

Passat B6 / 3C Devil Eyes Headlight Install (aka S5 / R8 LED DRL lights)



Notes:

I am mostly going over the VCDS (VAG-COM) settings that you need to change to make these work as Daytime Running Lights. See add endums for bumper removal and VCDS settings if you are adding HIDs.

The term parking lights, marker lights, clearance lights, conspicuity lights all mean the same thing; basically the lights on all 4 corners are lit up so other people can see you.

These will not work on cars that have factory Bi-Xenon installed!

If you are in EU, these may be simple plug and play and no VCDS changes may be necessary.

If you have the regular NAR switch and do not make any VCDS changes, here's how the lights will work:
off = low beam as DRL ("S5 look" LEDs will not be active!)
on = LEDs on, low beams on, tail lights on, license plate lights on
on + fog = LEDs on, low beams on, front fog on, tail lights on, license plate lights on

Thank you to big_dish, dubman6, to vw_guy_76, akaria930, FL PASSAT DRIVER, and mailforme.

Thanks to chadcronin for the bumper removal and help with VCDS, thanks to VWGT f for the headlights (months before others in North America!)

If you see anything that needs adjustment or what ever, please contact me through the vvwvortex forum , handle is Angelico.

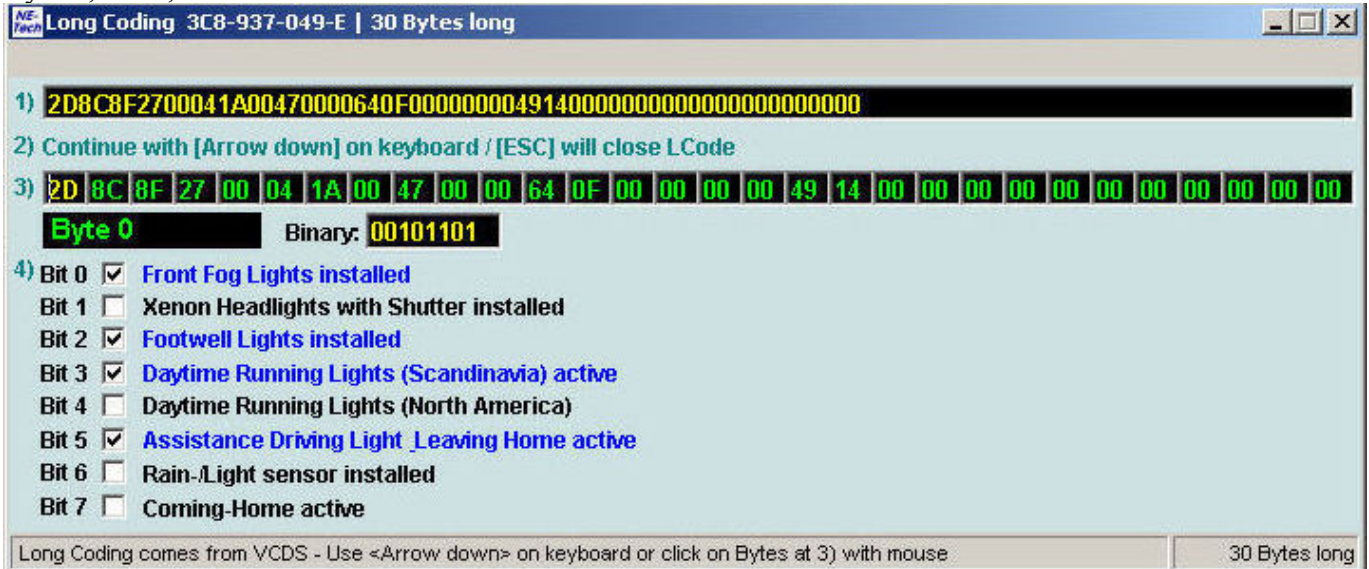
VCDS Settings:

These are the settings you need to make with VCDS for what I feel is the best look and "safest" lighting option. (usual note: Don't simply copy the Long Coding, you can stuff up you car!)

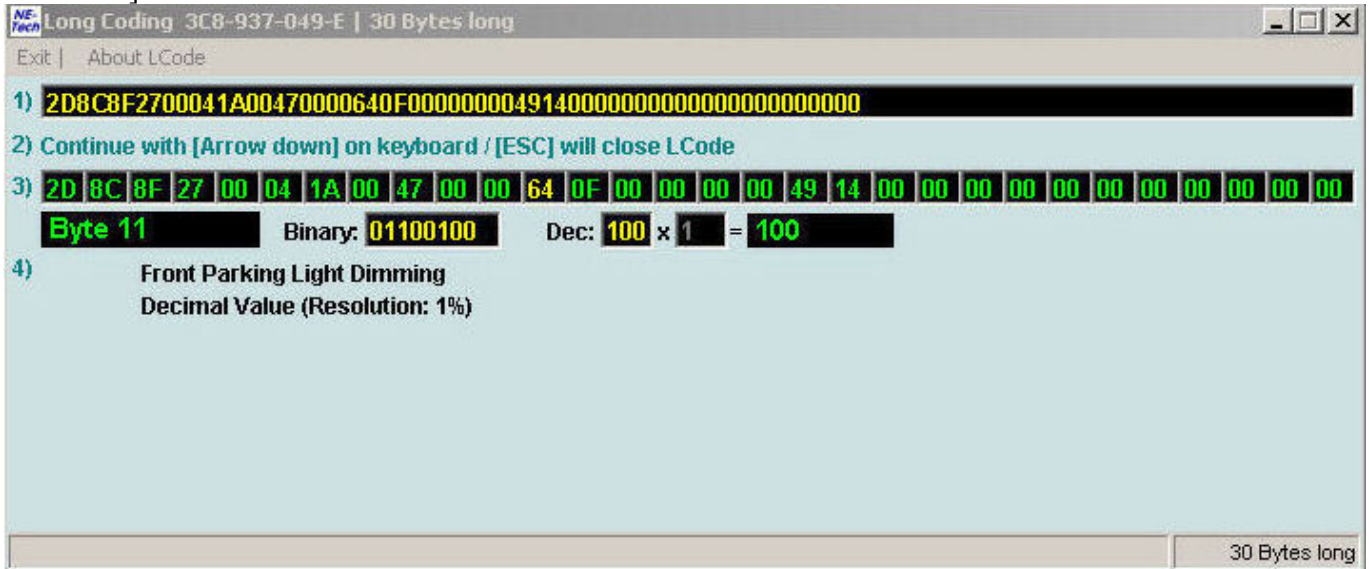
All changes are in 09-Central Electronics:

Byte 0, Bit 3, checked - DRL Scandinavia

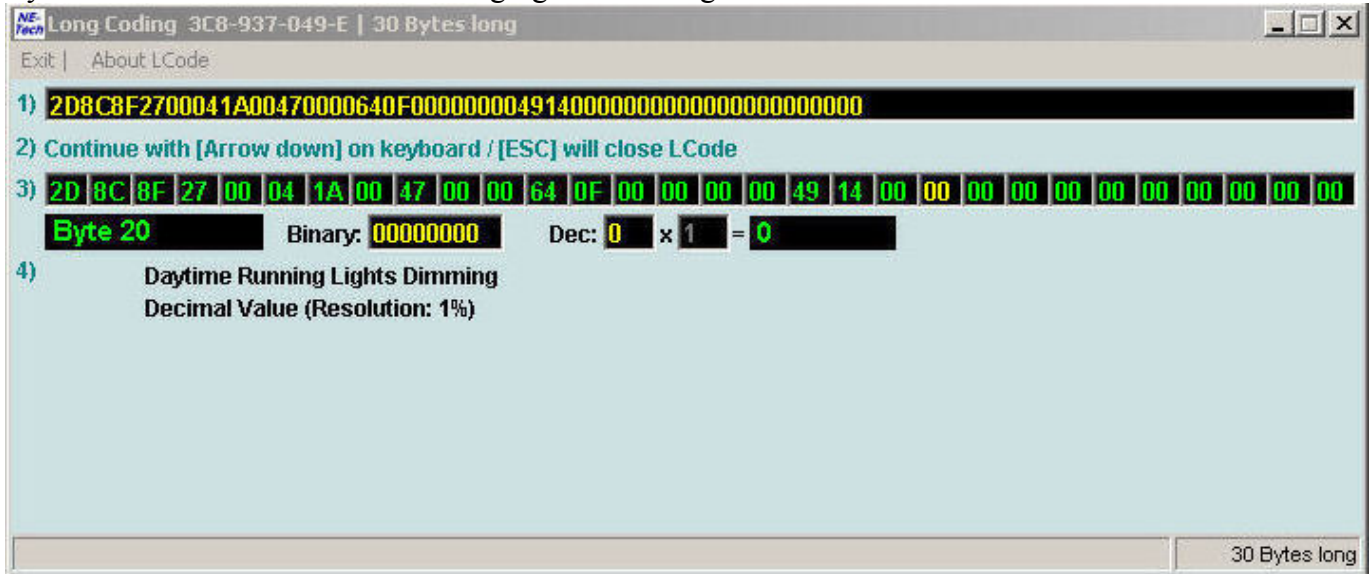
Byte 0, Bit 4, unchecked - DRL North America



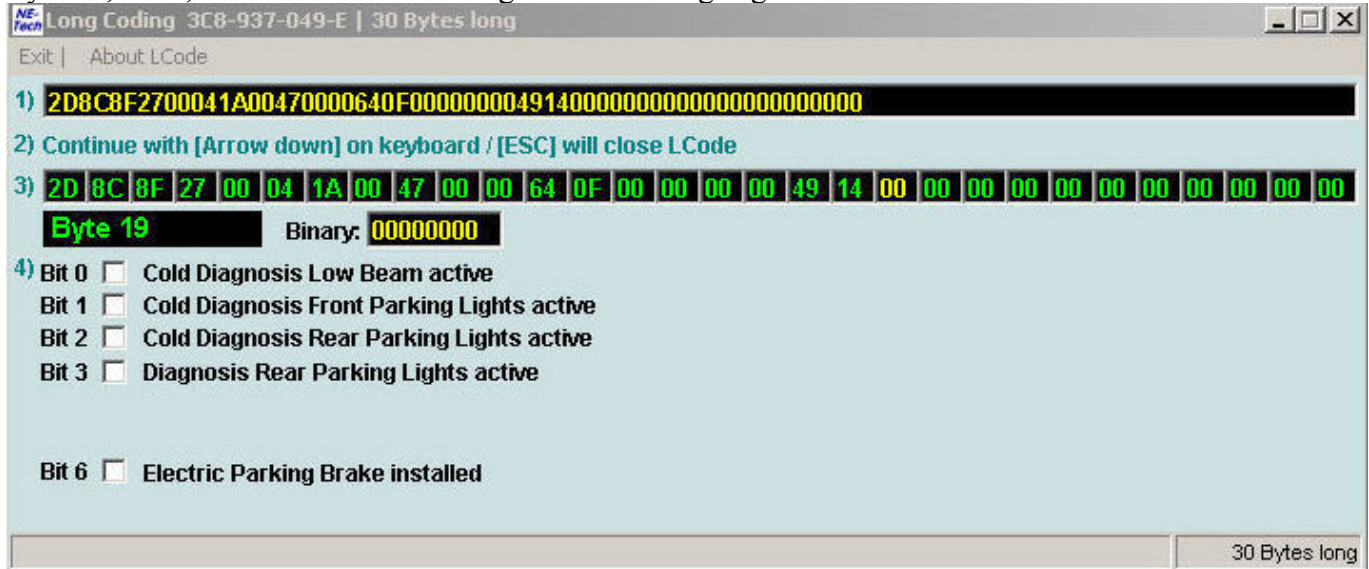
Byte 11 - set to 100% for maximum intensity of LEDs (this would have been the orange bulb in the stock headlights) [if they aren't lighting properly you can go above 100%. 112% has worked for a couple of members.]



Byte 20 - set to 0% so low beam or fog lights do not light as DRL.



Byte 19, Bit 1, unchecked so Cold Diag for the Parking Lights is OFF.



If you have the regular NAR switch, the result will be:

off = LEDs on as DRL, tail lights on, license plate lights on

on = LEDs on, low beams on, tail lights on, license plate lights on

on + fog = LEDs on, low beams on, front fog on, tail lights on, license plate lights on

If you have the Euro (non auto) switch, the result will be:

off = LEDs on as DRL, tail lights on, license plate lights on

parking = LEDs on as DRL, tail lights on, license plate lights on

parking+ front fog = LEDs on as DRL, front fog on, tail lights on, license plate lights on

on = LEDs on, low beams on, tail lights on, license plate lights on

on + fog = LEDs on, low beams on, front fog on, tail lights on, license plate lights on

Now if you have the Euro switch, you can also disable the Scandinavian DRL so that when you are in the "off" position, nothing is on, and then just use the "parking" position to light up the marker lights and S5 look LEDs.

I believe if you have the "auto" position, you should have Scandinavian DRL enabled and then the headlights will come on as expected.

Sorry, the license plate lights are always on with the Scandinavian DRL, there are no settings in VCDS to change this that I could find.

Suggested Tool List

Torx (T-20)

Torx (T-25)

ratchet

10mm socket and 12" extension

19mm socket

Flat blade screw driver

6mm Allen key

Car jack and tools for taking off the wheels